

# Accommodation Options



## Willandra



📍 19-21 George Street, Marrickville, NSW 2204

☎ 02 9569 4117

Located in Marrickville, the multi-cultural hub of Sydney's inner-west, Willandra provides high-quality aged care in a friendly, secure and comfortable residential environment.

- ✔ Aged Care
- ✔ Dementia Care
- ✔ Respite Care

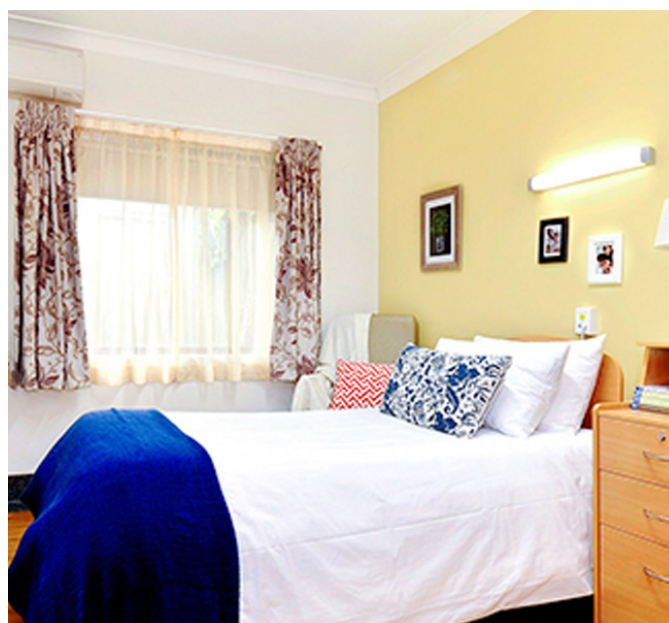
## Single Room

### Room features

- ✔ Comfortable private room.
- ✔ Plenty of space for storage.
- ✔ Temperature controlled with a single unit air-conditioning system for personal comfort.

### Design features

- ✔ Warm and welcoming feel of a true family home.
- ✔ Services and support designed to optimise your health and wellbeing.



### Single Room Room Cost

**\$420,000**

HEART OF POSITIVE AGEING



# Accommodation Options

## Willandra

📍 19-21 George Street, Marrickville, NSW 2204

☎ 02 9569 4117

Located in Marrickville, the multi-cultural hub of Sydney's inner-west, Willandra provides high-quality aged care in a friendly, secure and comfortable residential environment.

- ✔ Aged Care      ✔ Dementia Care      ✔ Respite Care

## Companion Room Double

### Room features

- ✔ Bright and airy room with an abundance of natural light.
- ✔ Wide windows overlooking the landscaped gardens and direct access to the front verandah.
- ✔ Temperature controlled via central heating systems and fitted ceiling fans.

### Design features

- ✔ Warm and welcoming feel of a true family home.
- ✔ Services and support designed to optimise your health and wellbeing.



### Companion Room Double Room Cost

**\$340,000**

HEART OF POSITIVE AGEING

 **Bolton  
Clarke** | RESIDENTIAL  
AGED CARE

# Accommodation Options

## Willandra

📍 19-21 George Street, Marrickville, NSW 2204

☎ 02 9569 4117

Located in Marrickville, the multi-cultural hub of Sydney's inner-west, Willandra provides high-quality aged care in a friendly, secure and comfortable residential environment.

- ✔ Aged Care
- ✔ Dementia Care
- ✔ Respite Care

## Companion Room - 3 Bed

### Room features

- ✔ Bright and airy room with an abundance of natural light.
- ✔ Wide windows overlooking the landscaped gardens and direct access to the front verandah.
- ✔ Temperature controlled via central heating systems and fitted ceiling fans.

### Design features

- ✔ Warm and welcoming feel of a true family home.
- ✔ Services and support designed to optimise your health and wellbeing.



### Companion Room - 3 Bed Room Cost

**\$315,000**

HEART OF POSITIVE AGEING

 **Bolton  
Clarke** | RESIDENTIAL  
AGED CARE

# Accommodation Options



## Willandra



📍 19-21 George Street, Marrickville, NSW 2204

☎ 02 9569 4117

Located in Marrickville, the multi-cultural hub of Sydney's inner-west, Willandra provides high-quality aged care in a friendly, secure and comfortable residential environment.

- ✔ Aged Care
- ✔ Dementia Care
- ✔ Respite Care

## Companion Room - 4 Bed

### Room features

- ✔ Bright and airy room with an abundance of natural light.
- ✔ Temperature controlled via central heating systems and fitted ceiling fans.

### Design features

- ✔ Warm and welcoming feel of a true family home.
- ✔ Services and support designed to optimise your health and wellbeing.



### Companion Room - 4 Bed Room Cost

**\$290,000**

HEART OF POSITIVE AGEING

